

	FRAME	
AR01 - Frame - 2 units (impossible to join at a 90° angle)		
AR02 - Frame - 3 units (impossible to join at a 90° angle)		
AR03 - Frame - 3 units		
AR04 - Frame - 4 units		
AR05 - Frame - 5 units		
AR1K - Element required to end any configuration		
AR1S - Element required to connect separate frame		

CONFIGURATION

	Colours	Top	Group II	Group III	Group IV
		2 COLOURS	MEDLEY ATLANTIC	XTREME	ALCANTARA
ES01 - Seat		-			
ES02 - Seat with back		-			
ES03 - Tabletop			-	-	-
ES04 - Shelf			-	-	-

SEAT, BACKREST

Moulded foam with a density of 55kg/m3, upholstered.

FRAME

2 colours: pearl white semi-matt M016, black semi-matt M115. Frame made of tube Ø25mm, wall thickness 1,5mm. Finished with polypropylen feet.

TABLE, SHELF

MDF, natural veneer light ash, 2 colours: pearl white, black.

DIMENSIONS

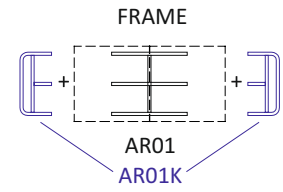


Frame	D / W / H
AR01 - 9 kg gross,	630/550/50
AR02 - 13 kg gross,	1230/550/50
AR03 - 13 kg gross,	880/880/380
AR04 - 17 kg gross,	880/880/410
AR05 - 21 kg gross,	880/880/440
AR1S - 4 kg gross,	530/530/380
AR1K - 2 kg gross,	530/280/380

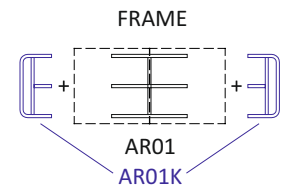
Elements for frame units	D / W / H
ES01 - 5 kg gross,	630/60/370
ES02 - 9 kg gross,	630/630/100
ES03 - 5 kg gross,	600/600/40



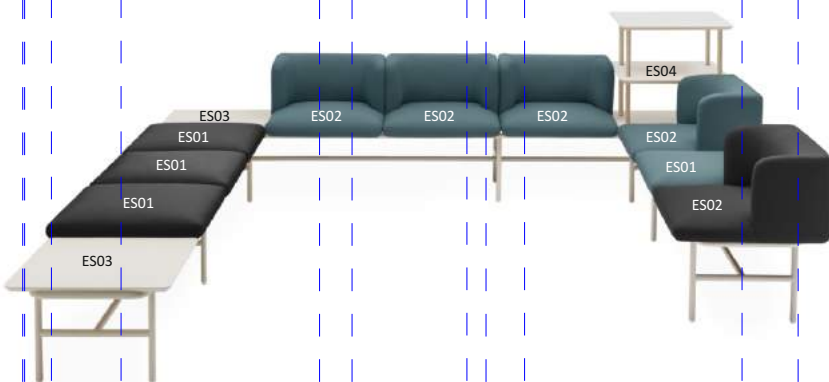
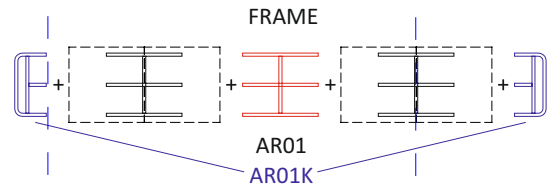
Frame: AR01K + AR01
Configuration: 2 x ES02



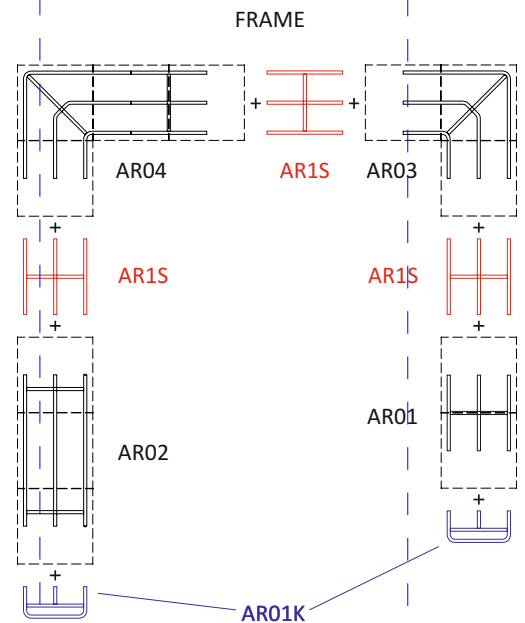
Frame: AR01K + AR1
Configuration: ES01 + ES02



Frame: AR1K + AR01 + AR1S + AR01
Configuration: 4 x ES02



Frame: AR1K + AR02 + AR1S + AR03 + AR1S + AR04 + AR1S + AR01
Configuration: ES03 + 3 x ES01 + ES03 + 3 x ES02 + ES04 + ES02 + ES01 + ES02





MEDLEY

Group II

M-63064



M-68005



M-68002



M-68115



M-64019



M-67053



M-67006



M-60999



M-66008

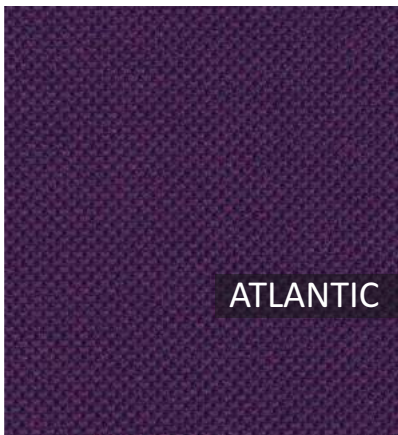


M-61002

Technical data

Material
Fabric weight/lm
Abrasion resistance rubs
Pilling resistance
Colour fastness to light
Colour fastness to rubbing
Acoustic test sound absorption
Flammability

polyester 100%
 364g/m2, 510g/lm
 75,000 Martindale cycles
 Scale 1-5, max. 5 - EN ISO 12945-2 4
 Scale 1-8, max. 8 - EN ISO 105-B02 5-7
 Scale 1-5, max. 5 - EN ISO 105x12 (wet/dry) 4-5/4-5
 ISO 354
 BS EN 1021 - 1:2006 (cigarette), BS EN 1021 - 2:2006, California Bulletin CAL 117-E-Class 1,
 Class Uno UNI 9175 Class 1 | EMME CA TB 117-2013



ATLANTIC

Group II

A-65037



A-64089



A-67043



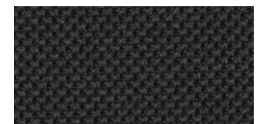
A-66064



A-62048



A-67030



A-60025



A-61078



A-60141

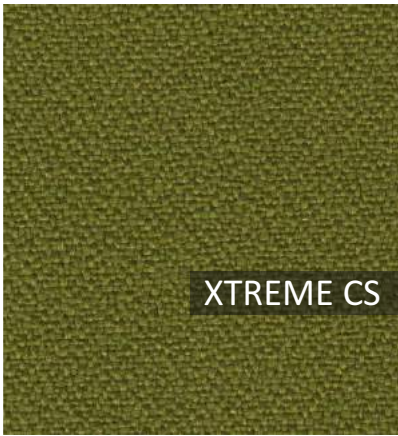


A-60011

Technical data

Material
Fabric weight
Abrasion resistance rubs
Colour fastness to light
Colour fastness to rubbing
Flammability

polyester 100%
 353g/m2, 530g/lm
 110,000 Rubs Martindale (EN ISO 12947-2)
 Scale 1-8, max. 8 - EN ISO 105-B02 5-7
 Scale 1-5, max. 5 - EN ISO 105x12 (wet/dry) 4-5/4-5
 ASTM E 84, BS 476 Part 7, class 1, BS EN 1021-1 cigarett, BS EN 1021-2 Match, CA TB 117-2013,
 Class Uno UNI 9175 Class 1 | EMME NF P 92-503 M3



XTREME CS

Group III

XR420



XR079



XR160



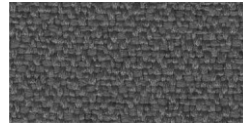
XR094



XR026



XR430



XR081



XR084



XR108



XR009



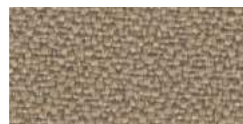
XTREME YS

Group III

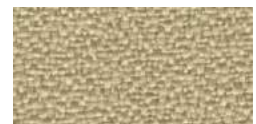
YS083



YS158



YS071

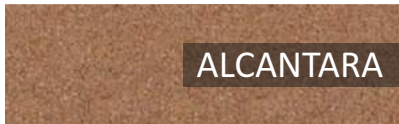


YS166

Technical data

Material
Fabric weight
Abrasion resistance rubs
Colour fastness to light
Colour fastness to rubbing
Flammability

100% Trevira Clame (CS), 100% Recycled (YS). Flame Retardant polyester, Non metallic dyestuffs.
 310g/m2 ±5% (435g/lin.m ±5%)
 60,000 Martindale cycles
 6 (ISO 105 - B02)
 Wet: 4, Dry: 4 (ISO 105 - X12)
 EN 1021 - 1 (cigarette), EN 1021 M - 2 (match), BS 7176 Low Hazard,
 NF P92-507 M1, DIN 4102 B1, UNI 9175 Classe 1 IM, UNI 8456,
 UNI 9174 & UNI 9177 Classe Uno, ÖNORM B 3825 & A 3800 -1, NF D 60-013



ALCANTARA

Group IV

Taupe 4180

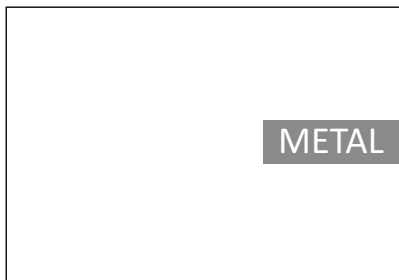


Antracyt 6422

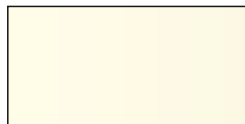
Technical data

Material
Fabric weight
Abrasion resistance rubs
Colour fastness to light
Colour fastness to rubbing
Flammability

68% PES, 32% PU, 100 % PES
 350g/m2 (+/- 40g)
 150,000 Martindale cycles (EN ISO 12947-2)
 5 (EN ISO 105-B02)
 Wet: 4, Dry: 4 (EN ISO 105x12)
 BS5852 Crib 5, EN1021 1+2, ÖN3800 B1/Q1, CH V.3



METAL



M016 - Pearl white semi-matt



M115 - Black semi-matt