

Group	I	II	III
Seat colours	NEMO	RUNNER MEDLEY ATLANTIC VITA	XTREME SYNERGY
Price			

CONFIGURATION Standard Option

SEAT	Upholstered, sliding	<input type="radio"/>
BACKREST	Mesh (9 colors Runner)	<input type="radio"/>
MECHANISM	Auto Synchro	<input type="radio"/>
	Synchro Pro	<input checked="" type="radio"/>
BASE	Nylon	<input type="radio"/>
	Polished aluminum	<input checked="" type="radio"/>
HEADREST	No	<input type="radio"/>
	Black mesh	<input checked="" type="radio"/>
ARMREST	No	<input type="radio"/>
	2D-V3, polyurethane, black finish	<input checked="" type="radio"/>
	3D-V3, polyurethane, black finish	<input checked="" type="radio"/>
LUMBAR SUPPORT	No	<input type="radio"/>
	Adjustable	<input checked="" type="radio"/>
CASTORS	Hard castors for soft floors with brake	<input type="radio"/>
	Soft castors for hard floors with brake	<input checked="" type="radio"/>

DIMENSIONS



MECHANISMS



AUTO SYNCHRO

- Synchronized automated regulation chair back press mechanism.
- Designed for usage 45 and 120kg.
- Allows for easy back tilt adjustment from 0 to 18 degrees at the same time the seating is set from 0 to 4.5 degrees.
- You have the possibility of locking the chairback only in the 0 degrees position.
- 100 mm depth adjustment, possibility to lock in 11 positions.



SYNCHRO PRO

- Tilt angle of the backrest 25° and the seat 10°.
- Designed for usage 45 and 120kg.
- Additional front seat tilt incl. back of 3°.
- 3 blocking positions of the backrest.
- Anti-shock system.
- Adjustment of lateral tension.
- 100 mm depth adjustment, possibility to lock in 11 positions.

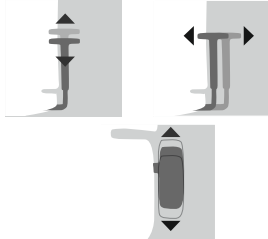
ARMRESTS

2D-V3 Adjustable armrest



- Width adjustment.
- Height adjustment.

3D-V3 Adjustable armrest



- Width adjustment.
 - Height adjustment.
 - Depth adjustment.
- + additional width adjustment inwards.

BASES



- 5-star black polypropylene, $\varnothing = 680\text{mm}$ h = 124mm.
- 5-star polished aluminum, $\varnothing = 680\text{mm}$ h = 124mm.

CASTORS



- Black castors with self-acting load brake PP+PA.
- Black castors with self acting load brake with rubber tyre (for hard surfaces) PP+PA.

GAS SPRING



- Gas spring for chairs.
- Material steel.
- Colors chrome or black.
- Adjustment range 100mm.

BACKREST



- Mesh (9 colors Runner).
- Manual height adjustable (60mm) lumbar support.



Group I

NE-9



NE-3



NE-2



NE-10



NE-5



NE-1



NE-14



NE-15



NE-17



NE-16

Technical data

Material
Fabric weight
Abrasion resistance rubs
Pilling resistance
Colour fastness to light
Colour fastness to rubbing

polyester 100%
 366g/m2
 PN-EN ISO 12947 - 2:2 100,000
 scale 1-8, max 8 · PN-EN ISO 105 - B02:2013 3-4
 scale 1-5, max 5 · PN-EN 1021 - 2:2007, PN-EN 1021 - 1:2007
 scale 1-5, max 5 · EN ISO 105x12 (wet/dry) 4-5



Group II

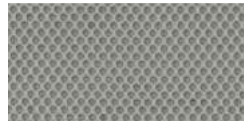
R-63034



R-64089



R-66063



R-60011



R-66064



R-68056



R-61128



R-60999



R-60025

Technical data

Material
Fabric weight/lm
Abrasion resistance rubs
Pilling resistance
Colour fastness to light
Colour fastness to rubbing
Acoustic test sound absorption
Flammability

polyester 100%
 320g/m2, 510g/lm (16.45 oz/lin.yd.)
 70,000 Martindale cycles, BS EN 14465, EN ISO 12947-2
 scale 1-5, max 5, EN ISO 12945-2 4-5
 scale 1-8, max 8, EN ISO 105 - B02 5-7
 scale 1-5, max 5, EN ISO 105x12 (wet/dry) 4-5
 ISO 354
 BS EN 1021-2 Match, California Bulletin CAL 117-E-Class 1 CA TB 117-2013,
 BS EN 1021-1 cigarette, Class Uno UNI 9175 Class 1 | EMNE, BS EN 1021-1 cigarette



MEDLEY

Group II

M-63064



M-68005



M-68002



M-68115



M-64019



M-67053



M-67006



M-60999



M-66008

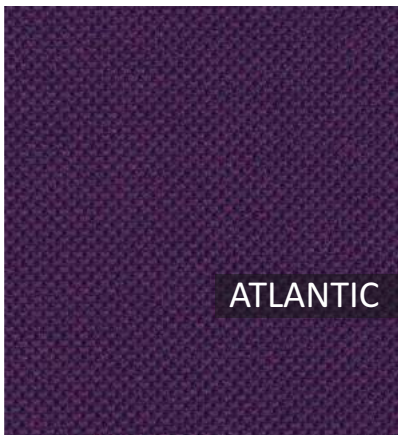


M-61002

Technical data

Material
Fabric weight/lm
Abrasion resistance rubs
Pilling resistance
Colour fastness to light
Colour fastness to rubbing
Acoustic test sound absorption
Flammability

polyester 100%
 364g/m2, 510g/lm
 75,000 Martindale cycles
 Scale 1-5, max. 5 - EN ISO 12945-2 4
 Scale 1-8, max. 8 - EN ISO 105-B02 5-7
 Scale 1-5, max. 5 - EN ISO 105x12 (wet/dry) 4-5/4-5
 ISO 354
 BS EN 1021 - 1:2006 (cigarette), BS EN 1021 - 2:2006, California Bulletin CAL 117-E-Class 1,
 Class Uno UNI 9175 Class 1 | EMME CA TB 117-2013



ATLANTIC

Group II

A-65037



A-64089



A-67043



A-66064



A-62048



A-67030



A-60025



A-61078



A-60141



A-60011

Technical data

Material
Fabric weight
Abrasion resistance rubs
Colour fastness to light
Colour fastness to rubbing
Flammability

polyester 100%
 353g/m2, 530g/lm
 110,000 Rubs Martindale (EN ISO 12947-2)
 Scale 1-8, max. 8 - EN ISO 105-B02 5-7
 Scale 1-5, max. 5 - EN ISO 105x12 (wet/dry) 4-5/4-5
 ASTM E 84, BS 476 Part 7, class 1, BS EN 1021-1 cigarett, BS EN 1021-2 Match, CA TB 117-2013,
 Class Uno UNI 9175 Class 1 | EMME NF P 92-503 M3



Group II V-23



V-01



V-02



V-03



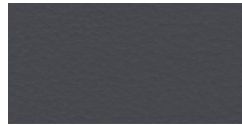
V-04



V-06



V-05



V-07



V-15



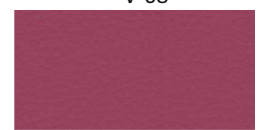
V-08



V-18



V-19



V-20

Technical data

- Material**
- Fabric weight**
- Abrasion resistance rubs**
- Flexes**
- Anti-microbial/ Anti-fungal**
- Flammability**

Surface: 98.5% PVC, 1.5% PU, Substrate: 50%, Polyester 50% Cotton
 850g/m2 ±10% (1190G/lin. m ±10%)
 100,000 Martindale cycles, BS EN ISO 5470-2:2003
 BS EN ISO 7854:1997 Method B, 400,000 Flexing cycles
 AATCC 147:2011
 BS EN 1021 - 1:2016 (cigarette), BS EN 1021 - 1:2016 (match),
 BS 5852:2006 Section 4 Ignition Source 5, BS 7176:2017 Medium Hazard,
 NF P 95 503 M2, FMVSS 302 (ISO 3795)



Group III XR420



Group III YS083



XR079



XR026



XR084



XR160



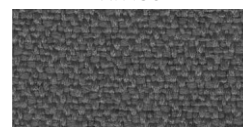
XR430



XR108



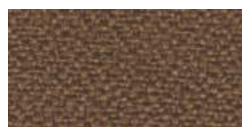
XR094



XR081



XR009



YS158



YS071



YS166

Technical data

- Material**
- Fabric weight**
- Abrasion resistance rubs**
- Colour fastness to light**
- Colour fastness to rubbing**
- Flammability**

100% Trevira Clame (CS), 100% Recycled (YS). Flame Retardant polyester, Non metallic dyestuffs.
 310g/m2 ±5% (435g/lin.m ±5%)
 60,000 Martindale cycles
 6 (ISO 105 - B02)
 Wet: 4, Dry: 4 (ISO 105 - X12)
 EN 1021 - 1 (cigarette), EN 1021 M - 2 (match), BS 7176 Low Hazard,
 NF P92-507 M1, DIN 4102 B1, UNI 9175 Classe 1 IM, UNI 8456,
 UNI 9174 & UNI 9177 Classe Uno, ÖNORM B 3825 & A 3800 -1, NF D 60-013

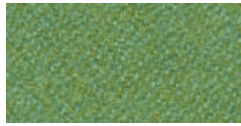


Group III

LDS27



LDS20



LDS53



LDS57



LDS84



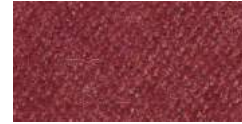
LDS08



LDS50



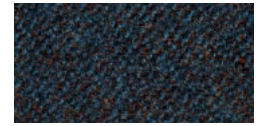
LDS61



LDS85



LDS29



LDS60



LDS69



LDS86



LDS88

Technical data

Material	95% Virgin Wool, 5% Polyamide
Fabric weight	400g/m2 ±5% (560g/lin.m ±5%)
Abrasion resistance rubs	Independently certified to ≥100,000 Martindale cycles
Light Fastness	ISO 105 - B02 5
Fastness to Rubbing	ISO 105 - X12 - Wet: 4, Dry: 4
Flammability	EN 1021 - 1 (cigarette), EN 1021 - 2 (match), BS 7176 Low Hazard ,UNI 9175 Classe 1 IM, ÖNORM B 3825 & A 3800-1