

Group	I	II	III
Seat colours	NEMO	RUNNER MEDLEY ATLANTIC VITA	XTREME SYNERGY

CONFIGURATION		<input type="radio"/> Standard <input checked="" type="radio"/> Option
SEAT	Upholstered	<input type="radio"/>
BACKREST	Mesh (String-in black only)	<input type="radio"/>
MECHANISM	Auto Synchro	<input type="radio"/>
BASE	Nylon	<input type="radio"/>
ARMREST	No	<input type="radio"/>
	2D, polyurethane, black finish	<input checked="" type="radio"/>
LUMBAR SUPPORT	Adjustable	<input type="radio"/>
CASTORS	Hard castors for soft floors with brake	<input type="radio"/>
	Soft castors for hard floors with brake	<input checked="" type="radio"/>
DIMENSIONS		



15 kg
gross
D / W / H
565/750/670

MECHANISMS



- Synchronized automated regulation chair back press mechanism.
- Designed for usage 45 and 120kg.
- Allows for easy back tilt adjustment from 0 to 20 degrees at the same time the seating is set from 0 to 6 degrees.
- Adjustment, possibility to lock in 5 positions.

ARMRESTS

2D Adjustable armrest



- Width adjustment.
- Height adjustment.

BASES



- 5-star black polypropylene,
 $\varnothing = 680\text{mm}$ $h = 80\text{mm}$.

CASTORS



- Black castors with self-acting load brake PP+PA.
- Black castors with self acting load brake with rubber tyre (for hard surfaces) PP+PA.

GAS SPRING

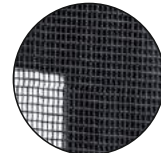


- Gas spring for chairs.
- Material steel.
- Color black.
- Adjustment range 130mm.

BACKREST



- Mesh (String-in black only).
- Manual height adjustable (60mm) lumbar support.



String



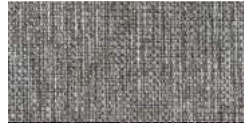
Group I NE-9



NE-3



NE-2



NE-10



NE-5



NE-1



NE-14



NE-15



NE-17



NE-16

Technical data

Material
Fabric weight
Abrasion resistance rubs
Pilling resistance
Colour fastness to light
Colour fastness to rubbing

polyester 100%
 366g/m2
 PN-EN ISO 12947 - 2:2 100,000
 scale 1-8, max 8 · PN-EN ISO 105 - B02:2013 3-4
 scale 1-5, max 5 · PN-EN 1021 - 2:2007, PN-EN 1021 - 1:2007
 scale 1-5, max 5 · EN ISO 105x12 (wet/dry) 4-5



Group II R-63034



R-64089



R-66063



R-60011



R-66064



R-68056



R-61128



R-60999



R-60025

Technical data

Material
Fabric weight/lm
Abrasion resistance rubs
Pilling resistance
Colour fastness to light
Colour fastness to rubbing
Acoustic test sound absorption
Flammability

polyester 100%
 320g/m2, 510g/lm (16.45 oz./lin.yd.)
 70,000 Martindale cycles, BS EN 14465, EN ISO 12947-2
 scale 1-5, max 5, EN ISO 12945-2 4-5
 scale 1-8, max 8, EN ISO 105 - B02 5-7
 scale 1-5, max 5, EN ISO 105x12 (wet/dry) 4-5
 ISO 354
 BS EN 1021-2 Match, California Bulletin CAL 117-E-Class 1 CA TB 117-2013,
 BS EN 1021-1 cigarette, Class Uno UNI 9175 Class 1 | EMNE, BS EN 1021-1 cigarette



MEDLEY

Group II

M-63064



M-68005



M-68002



M-68115



M-64019



M-67053



M-67006



M-60999



M-66008

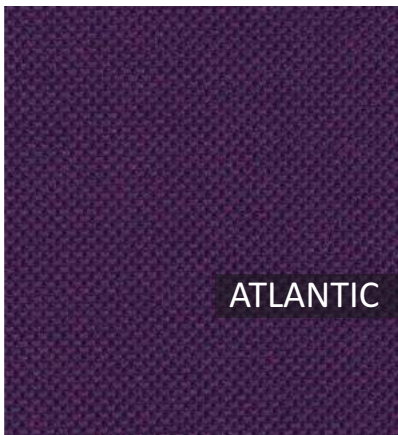


M-61002

Technical data

Material
Fabric weight/lm
Abrasion resistance rubs
Pilling resistance
Colour fastness to light
Colour fastness to rubbing
Acoustic test sound absorption
Flammability

polyester 100%
 364g/m2, 510g/lm
 75,000 Martindale cycles
 Scale 1-5, max. 5 - EN ISO 12945-2 4
 Scale 1-8, max. 8 - EN ISO 105-B02 5-7
 Scale 1-5, max. 5 - EN ISO 105x12 (wet/dry) 4-5/4-5
 ISO 354
 BS EN 1021 - 1:2006 (cigarette), BS EN 1021 - 2:2006, California Bulletin CAL 117-E-Class 1,
 Class Uno UNI 9175 Class 1 | EMME CA TB 117-2013



ATLANTIC

Group II

A-65037



A-64089



A-67043



A-66064



A-62048



A-67030



A-60025



A-61078



A-60141



A-60011

Technical data

Material
Fabric weight
Abrasion resistance rubs
Colour fastness to light
Colour fastness to rubbing
Flammability

polyester 100%
 353g/m2, 530g/lm
 110,000 Rubs Martindale (EN ISO 12947-2)
 Scale 1-8, max. 8 - EN ISO 105-B02 5-7
 Scale 1-5, max. 5 - EN ISO 105x12 (wet/dry) 4-5/4-5
 ASTM E 84, BS 476 Part 7, class 1, BS EN 1021-1 cigarett, BS EN 1021-2 Match, CA TB 117-2013,
 Class Uno UNI 9175 Class 1 | EMME NF P 92-503 M3



Group II V-23



V-01



V-02



V-03



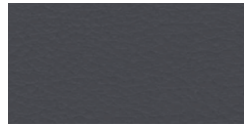
V-04



V-06



V-05



V-07



V-15



V-08



V-18



V-19



V-20

Technical data

- Material**
- Fabric weight**
- Abrasion resistance rubs**
- Flexes**
- Anti-microbial/ Anti-fungal**
- Flammability**

Surface: 98.5% PVC, 1.5% PU, Substrate: 50%, Polyester 50% Cotton
 850g/m2 ±10% (1190G/lin. m ±10%)
 100,000 Martindale cycles, BS EN ISO 5470-2:2003
 BS EN ISO 7854:1997 Method B, 400,000 Flexing cycles
 AATCC 147:2011
 BS EN 1021 - 1:2016 (cigarette), BS EN 1021 - 1:2016 (match),
 BS 5852:2006 Section 4 Ignition Source 5, BS 7176:2017 Medium Hazard,
 NF P 95 503 M2, FMVSS 302 (ISO 3795)



Group III XR420



Group III YS083



XR079



XR026



XR084



XR160



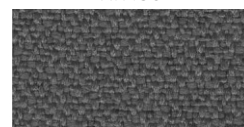
XR430



XR108



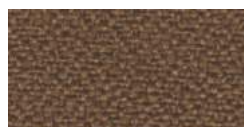
XR094



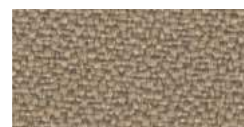
XR081



XR009



YS158



YS071



YS166

Technical data

- Material**
- Fabric weight**
- Abrasion resistance rubs**
- Colour fastness to light**
- Colour fastness to rubbing**
- Flammability**

100% Trevira Clame (CS), 100% Recycled (YS). Flame Retardant polyester, Non metallic dyestuffs.
 310g/m2 ±5% (435g/lin.m ±5%)
 60,000 Martindale cycles
 6 (ISO 105 - B02)
 Wet: 4, Dry: 4 (ISO 105 - X12)
 EN 1021 - 1 (cigarette), EN 1021 M - 2 (match), BS 7176 Low Hazard,
 NF P92-507 M1, DIN 4102 B1, UNI 9175 Classe 1 IM, UNI 8456,
 UNI 9174 & UNI 9177 Classe Uno, ÖNORM B 3825 & A 3800 -1, NF D 60-013

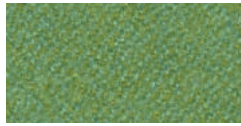


Group III

LDS27



LDS20



LDS53



LDS57



LDS84



LDS08



LDS50



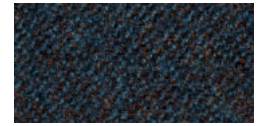
LDS61



LDS85



LDS29



LDS60



LDS69



LDS86



LDS88

Technical data

Material
Fabric weight
Abrasion resistance rubs
Light Fastness
Fastness to Rubbing
Flammability

95% Virgin Wool, 5% Polyamide
 400g/m2 ±5% (560g/lin.m ±5%)
 Independently certified to ≥100,000 Martindale cycles
 ISO 105 - B02 5
 ISO 105 - X12 - Wet: 4, Dry: 4
 EN 1021 - 1 (cigarette), EN 1021 - 2 (match), BS 7176 Low Hazard ,UNI 9175 Classe 1 IM,
 ÖNORM B 3825 & A 3800-1

Colours presented in the catalogue may vary from the original colours of furniture.