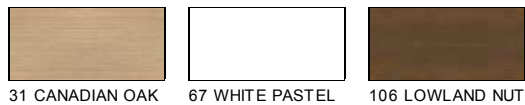


TECHNICAL SPECIFICATION

COLOURS

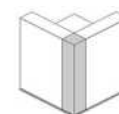
BODY, FRONT, COUNTER TOP



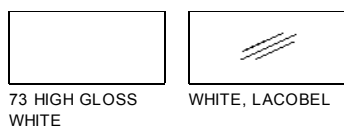
HPL ELEMENTS STRUCTURE



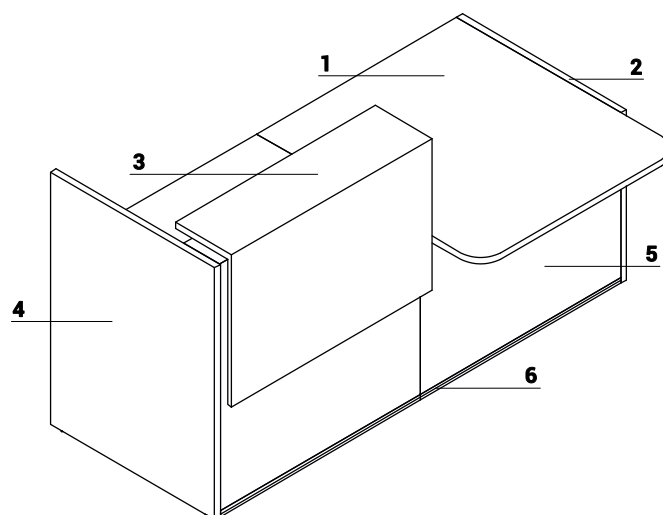
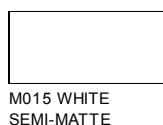
CORNER UNIT



OPTIONAL TOP ELEMENT WITH LIGHT

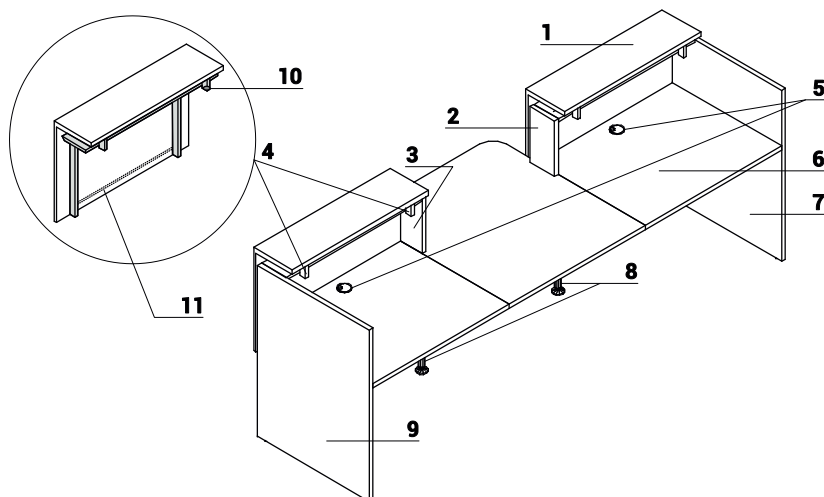


SUPPORTING LEG WHERE WORKTOPS CONNECT NL41

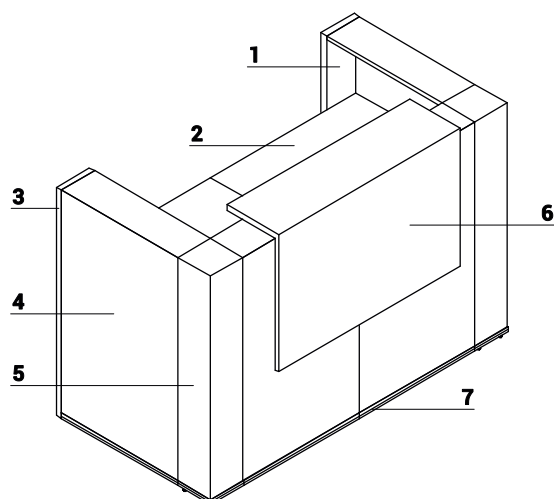


1. **Worktop** - MFC 28mm, PVC edge
2. **Low side panel** - MFC 28mm, PVC edge
3. **Optional top element with lightening** - top melamine board 28mm + Glass LACOBEL 4mm, front melamine board 18mm, all in HPL - gloss
4. **High side panel** - MFC 28mm, PVC edge
5. **Front** - MFC 18mm, PVC edge
6. **Decorative stripe** - PVC, colour: M009 - aluminum semi-matte

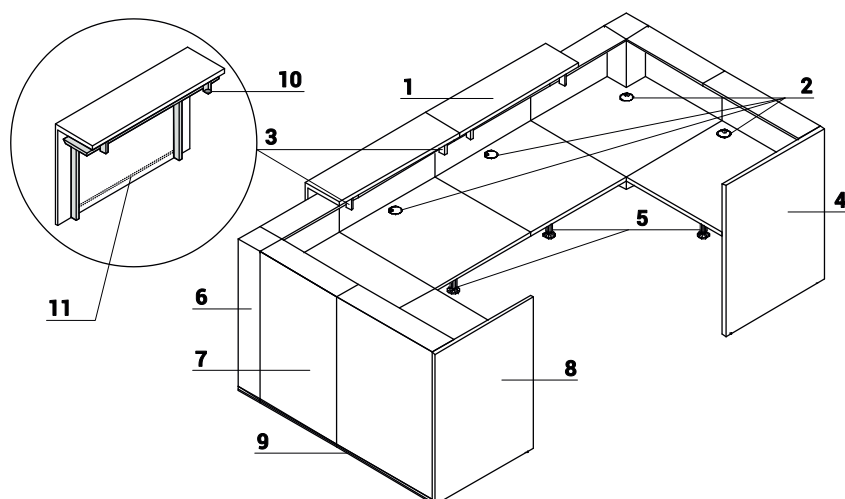
TECHNICAL SPECIFICATION



1. **Optional top element with lightening** - top melamine board 28mm + Glass LACOBEL 4mm, front melamine board 18mm, all in HPL - gloss
2. **Side panel linking low and high fronts** - MFC 28mm, PVC edge
3. **Side panel linking low and high fronts** - MFC 28mm, PVC edge
4. **Frame to optional top element with lightening** - metal powder - coated, white colour
5. **Cable grommets** - Ø80mm
6. **Worktop** - MFC 28mm, PVC edge
7. **High side panel** - MFC 28mm, PVC edge
8. **Supporting leg NL41**- required for connecting the tops
9. **High side panel** - MFC 28mm, PVC edge
10. **Light switch**
11. **LED lighting** - over the entire length of the extension, cold white (bluish kind of white)

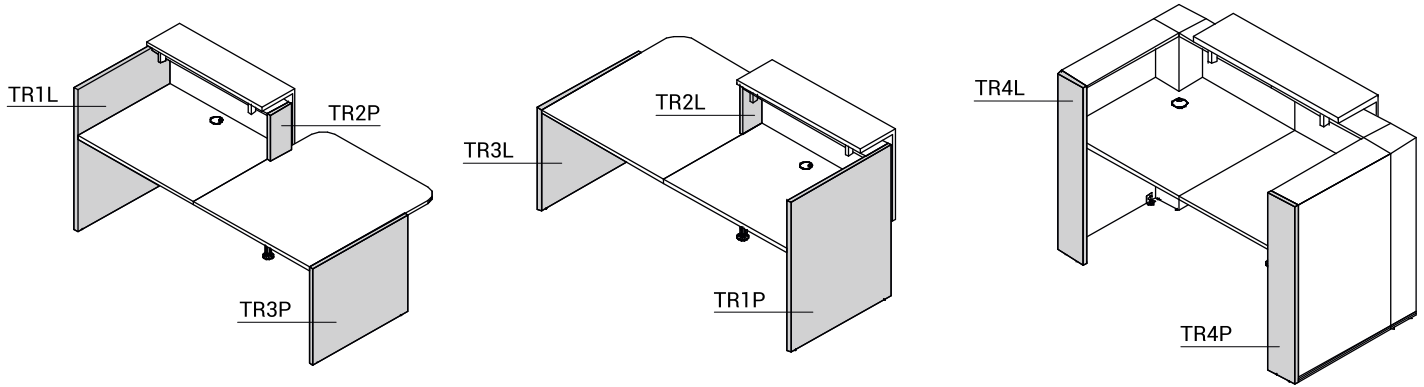


1. **High side panel** - MFC 28mm, PVC edge
2. **Worktop** - MFC 28mm, PVC edge
3. **High side panel** - MFC 28mm, PVC edge
4. **Front** - MFC 18mm, PVC edge
5. **Corner unit** - melamine board covered with HPL - gloss
6. **Optional top element with lightening** - top melamine board 28mm + Glass LACOBEL 4mm, front melamine board 18mm, all in HPL - gloss
7. **Decorative stripe** - PVC, colour: M009 - aluminum semi-matte

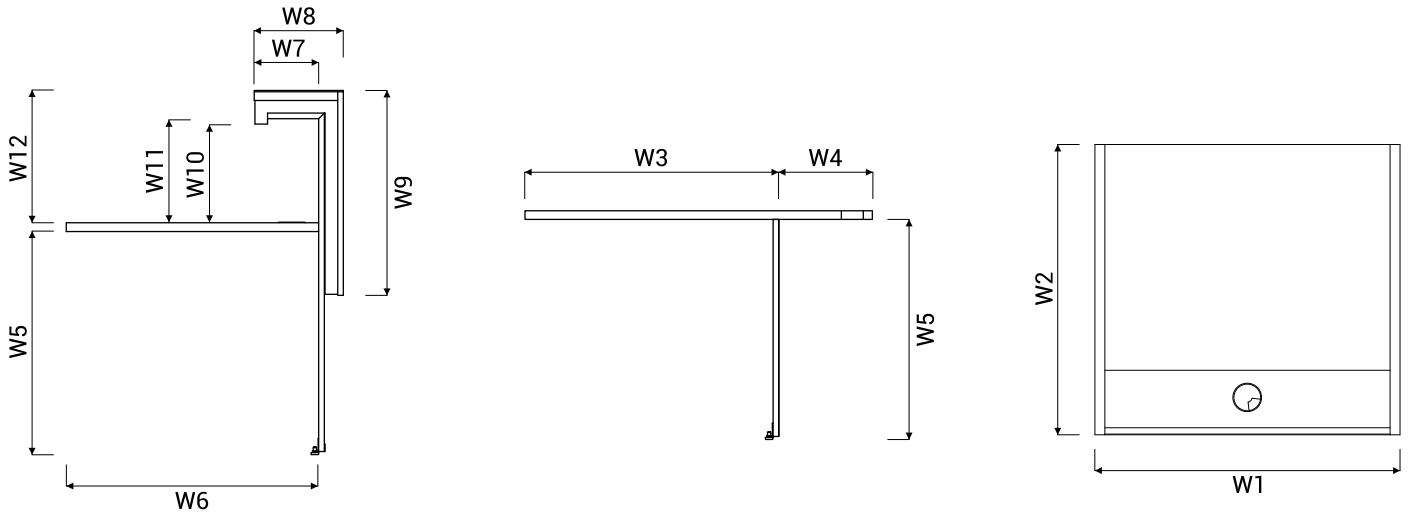


1. **Optional top element with lightening** - top melamine board 28mm + Glass LACOBEL 4mm, front melamine board 18mm, all in HPL - gloss
2. **Cable grommets** - Ø80mm
3. **Frame to optional top element with lightening** - metal powder - coated, white colour
4. **High side panel** - MFC 28mm, PVC edge
5. **Supporting leg NL41**- required for connecting the tops
6. **Corner unit** - melamine board covered with HPL - gloss
7. **Front** - MFC 18mm, PVC edge
8. **High side panel** - MFC 28mm, PVC edge
9. **Decorative stripe** - PVC, colour: M009 - aluminum semi-matte
10. **Light switch**
11. **LED lighting** - over the entire length of the extension, cold white (bluish kind of white)

TECHNICAL SPECIFICATION

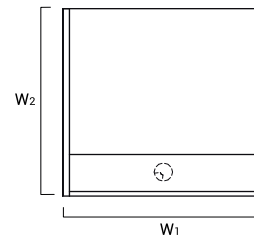
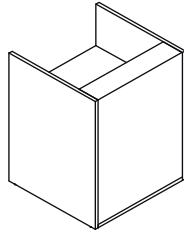


DIMENSIONS

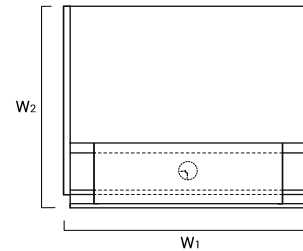
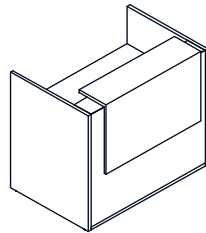


W1 - 856mm | W2 - 820mm | W3 - 818mm | W4 - 302mm | W5 - 740mm | W6 - 800mm | W7 - 205mm | W8 - 282mm | W9 - 650mm | W10 - 315mm | W11 - 322mm | W12 - 419mm

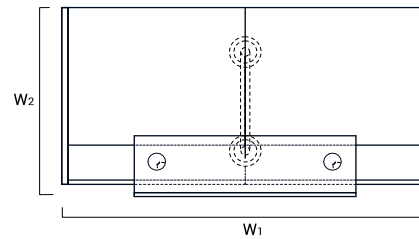
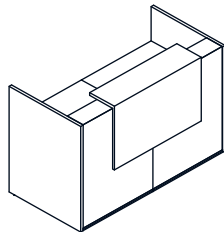
RECEPTION DESKS SYSTEMS



| INDEX SYMBOL | DIMENSIONS [mm] | | | | | | | | | | COMPONENTS |
|--------------|-----------------|----------------|----------------|----------------|------|--|------|-------|---|--|----------------|
| | W ₁ | W ₂ | D ₁ | D ₂ | H | | | | | | |
| TRA13 | 856 | 820 | | | 1090 | | 59.0 | 0.124 | 3 | | TR1L+TR08+TR1P |



| INDEX SYMBOL | DIMENSIONS [mm] | | | | | | | | | | COMPONENTS |
|--------------|-----------------|----------------|----------------|----------------|------|--|------|-------|---|--|---------------------|
| | W ₁ | W ₂ | D ₁ | D ₂ | H | | | | | | |
| TRA14 | 1056 | 877 | | | 1159 | | 83.0 | 0.320 | 4 | | TR1L+TR10+TR99+TR1P |
| TRA15 | 1256 | 877 | | | 1159 | | 87.0 | 0.332 | 4 | | TR1L+TR12+TR99+TR1P |
| TRA16 | 1456 | 877 | | | 1159 | | 89.0 | 0.344 | 4 | | TR1L+TR14+TR99+TR1P |



| INDEX SYMBOL | DIMENSIONS [mm] | | | | | | | | | | COMPONENTS |
|--------------|-----------------|----------------|----------------|----------------|------|--|-------|-------|---|--|----------------------------|
| | W ₁ | W ₂ | D ₁ | D ₂ | H | | | | | | |
| TRA17 | 1656 | 877 | | | 1159 | | 103.0 | 0.425 | 6 | | TR1L+2xTR08+TR99+TR1P+NL41 |
| TRA18 | 2056 | 877 | | | 1159 | | 117.0 | 0.449 | 6 | | TR1L+2xTR10+TR99+TR1P+NL41 |
| TRA19 | 2456 | 877 | | | 1159 | | 125.0 | 0.473 | 6 | | TR1L+2xTR12+TR99+TR1P+NL41 |
| TRA20 | 2856 | 877 | | | 1159 | | 129.0 | 0.498 | 6 | | TR1L+2xTR14+TR99+TR1P+NL41 |

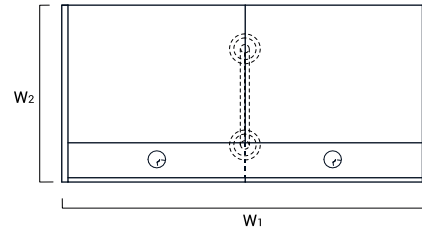
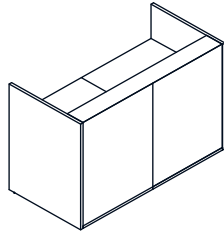
DESCRIPTION

- NET WEIGHT

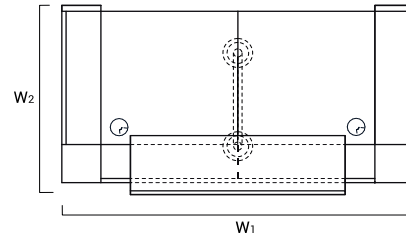
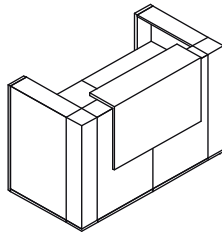
VOLUME

NUMBER OF PACKAGES

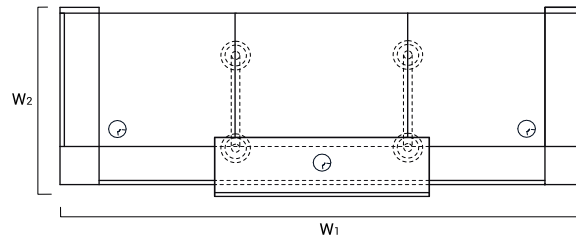
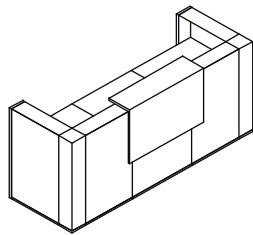
RECEPTION DESKS SYSTEMS



| INDEX SYMBOL | DIMENSIONS [mm] | | | | | | kg | m3 | pcs | COMPONENTS |
|--------------|-----------------|----------------|----------------|----------------|------|--|-------|-------|-----|-----------------------|
| | W ₁ | W ₂ | D ₁ | D ₂ | H | | | | | |
| TRA117 | 1656 | 820 | | | 1090 | | 86.0 | 0.242 | 5 | TR1L+2xTR08+TR1P+NL41 |
| TRA118 | 2056 | 820 | | | 1090 | | 100.0 | 0.266 | 5 | TR1L+2xTR10+TR1P+NL41 |
| TRA119 | 2456 | 820 | | | 1090 | | 108.0 | 0.290 | 5 | TR1L+2xTR12+TR1P+NL41 |
| TRA120 | 2856 | 820 | | | 1090 | | 112.0 | 0.314 | 5 | TR1L+2xTR14+TR1P+NL41 |



| INDEX SYMBOL | DIMENSIONS [mm] | | | | | | kg | m3 | pcs | COMPONENTS |
|--------------|-----------------|----------------|----------------|----------------|------|--|------|-------|-----|----------------------------|
| | W ₁ | W ₂ | D ₁ | D ₂ | H | | | | | |
| TRA42 | 1640 | 905 | | | 1159 | | 99.0 | 0.460 | 8 | TR4L+2xTR90+TR4P+TR99+NL41 |



| INDEX SYMBOL | DIMENSIONS [mm] | | | | | | kg | m3 | pcs | COMPONENTS |
|--------------|-----------------|----------------|----------------|----------------|------|--|-------|-------|-----|-----------------------------------|
| | W ₁ | W ₂ | D ₁ | D ₂ | H | | | | | |
| TRA21 | 2440 | 905 | | | 1159 | | 126.0 | 0.577 | 10 | TR4L+2xTR90+TR08+TR4P+TR99+2xNL41 |
| TRA22 | 2640 | 905 | | | 1159 | | 133.0 | 0.590 | 10 | TR4L+2xTR90+TR10+TR4P+TR99+2xNL41 |
| TRA23 | 2840 | 905 | | | 1159 | | 137.0 | 0.602 | 10 | TR4L+2xTR90+TR12+TR4P+TR99+2xNL41 |
| TRA24 | 3040 | 905 | | | 1159 | | 139.0 | 0.614 | 10 | TR4L+2xTR90+TR14+TR4P+TR99+2xNL41 |

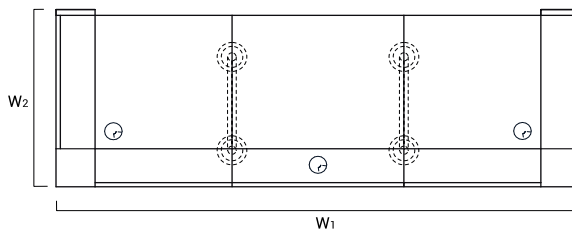
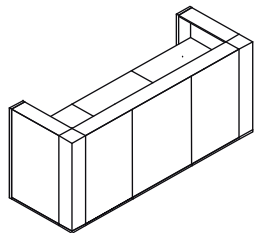
DESCRIPTION

- NET WEIGHT

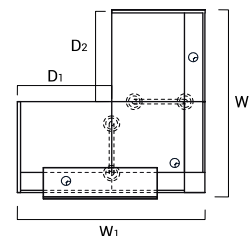
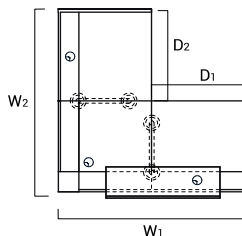
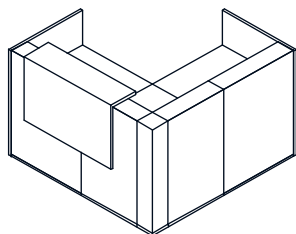
VOLUME

NUMBER OF PACKAGES

RECEPTION DESKS SYSTEMS



| INDEX SYMBOL | DIMENSIONS [mm] | | | | | | kg | m3 | pcs | | COMPONENTS |
|--------------|-----------------|----------------|----------------|----------------|------|--|-------|-------|-----|--|------------------------------|
| | W ₁ | W ₂ | D ₁ | D ₂ | H | | | | | | |
| TRA121 | 2440 | 848 | | | 1090 | | 109.0 | 0.394 | 9 | | TR4L+2xTR90+TR08+TR4P+2xNL41 |
| TRA122 | 2640 | 848 | | | 1090 | | 116.0 | 0.406 | 9 | | TR4L+2xTR90+TR10+TR4P+2xNL41 |
| TRA123 | 2840 | 848 | | | 1090 | | 120.0 | 0.418 | 9 | | TR4L+2xTR90+TR12+TR4P+2xNL41 |
| TRA124 | 3040 | 848 | | | 1090 | | 122.0 | 0.430 | 9 | | TR4L+2xTR90+TR14+TR4P+2xNL41 |



| INDEX SYMBOL | DIMENSIONS [mm] | | | | | | kg | m3 | pcs | | COMPONENTS |
|--------------|-----------------|----------------|----------------|----------------|------|--|-------|-------|-----|--|--------------------------------------|
| | W ₁ | W ₂ | D ₁ | D ₂ | H | | | | | | |
| TRA25 | 1648 | 1705 | | | 1159 | | 141.0 | 0.586 | 9 | | TR1L+TR08+TR90+TR08+TR1P+TR99+2xNL41 |
| TRA26 | 1848 | 1705 | | | 1159 | | 148.0 | 0.598 | 9 | | TR1L+TR08+TR90+TR10+TR1P+TR99+2xNL41 |
| TRA27 | 2048 | 1705 | | | 1159 | | 152.0 | 0.611 | 9 | | TR1L+TR08+TR90+TR12+TR1P+TR99+2xNL41 |
| TRA28 | 2248 | 1705 | | | 1159 | | 154.0 | 0.623 | 9 | | TR1L+TR08+TR90+TR14+TR1P+TR99+2xNL41 |

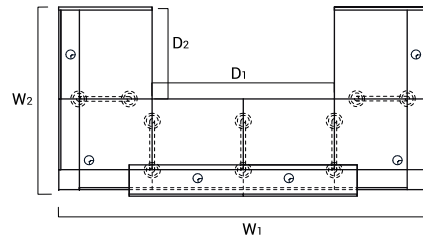
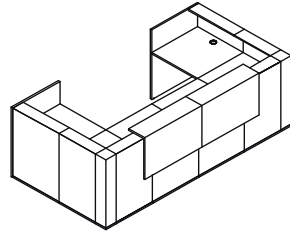
DESCRIPTION

- NET WEIGHT

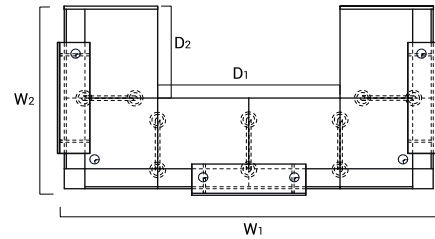
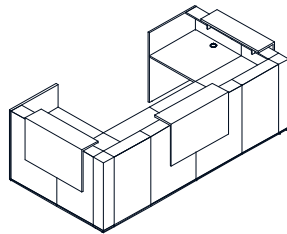
VOLUME

NUMBER OF PACKAGES

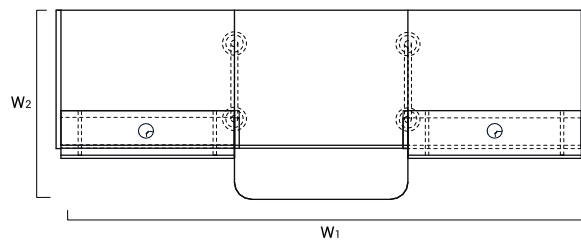
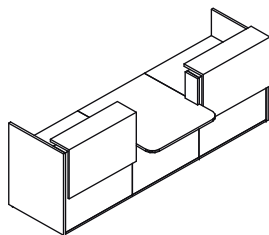
RECEPTION DESKS SYSTEMS



| INDEX SYMBOL | DIMENSIONS [mm] | | | | | | kg | m3 | pcs | | COMPONENTS |
|--------------|-----------------|----------------|----------------|----------------|------|--|-------|-------|-----|--|--|
| | W ₁ | W ₂ | D ₁ | D ₂ | H | | | | | | |
| TRA29 | 3240 | 1705 | | | 1159 | | 250.0 | 1.166 | 17 | | TR1L+2xTR08+2xTR90+2xTR08 +TR1P+2xTR99+5xNL41 |
| TRA30 | 3640 | 1705 | | | 1159 | | 264.0 | 1.190 | 17 | | TR1L+2xTR08+2xTR90+2xTR10 +TR1P+2xTR99+5xNL41 |
| TRA31 | 4040 | 1705 | | | 1159 | | 272.0 | 1.214 | 17 | | TR1L+2xTR08+2xTR90+2xTR12 +TR1P+2xTR99+5xNL41 |
| TRA32 | 4440 | 1705 | | | 1159 | | 276.0 | 1.239 | 17 | | TR1L+2xTR08+2xTR90+2xTR14 +TR1P+2xTR99+5xNL41 |



| INDEX SYMBOL | DIMENSIONS [mm] | | | | | | kg | m3 | pcs | | COMPONENTS |
|--------------|-----------------|----------------|----------------|----------------|------|--|-------|-------|-----|--|--|
| | W ₁ | W ₂ | D ₁ | D ₂ | H | | | | | | |
| TRA129 | 3354 | 1705 | | | 1159 | | 267.0 | 1.349 | 18 | | TR1L+2xTR08+2xTR90+2xTR08 +TR1P+3xTR99+5xNL41 |
| TRA130 | 3754 | 1705 | | | 1159 | | 281.0 | 1.374 | 18 | | TR1L+2xTR08+2xTR90+2xTR10 +TR1P+3xTR99+5xNL41 |
| TRA131 | 4154 | 1705 | | | 1159 | | 289.0 | 1.398 | 18 | | TR1L+2xTR08+2xTR90+2xTR12 +TR1P+3xTR99+5xNL41 |
| TRA132 | 4554 | 1705 | | | 1159 | | 293.0 | 1.422 | 18 | | TR1L+2xTR08+2xTR90+2xTR14 +TR1P+3xTR99+5xNL41 |



| INDEX SYMBOL | DIMENSIONS [mm] | | | | | | kg | m3 | pcs | | COMPONENTS |
|--------------|-----------------|----------------|----------------|----------------|------|--|-------|-------|-----|--|--|
| | W ₁ | W ₂ | D ₁ | D ₂ | H | | | | | | |
| TRA33 | 3056 | 1120 | | | 1159 | | 169.0 | 0.793 | 11 | | TR1L+TR10+TR2P+TR11+TR2L +TR10+TR1P+2xTR99+2xNL41 |
| TRA34 | 3456 | 1120 | | | 1159 | | 177.0 | 0.817 | 11 | | TR1L+TR12+TR2P+TR11+TR2L +TR12+TR1P+2xTR99+2xNL41 |
| TRA35 | 3856 | 1120 | | | 1159 | | 181.0 | 0.841 | 11 | | TR1L+TR14+TR2P+TR11+TR2L +TR14+TR1P+2xTR99+2xNL41 |

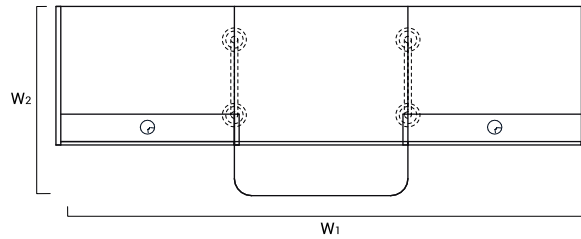
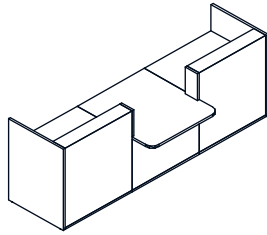
DESCRIPTION

- NET WEIGHT

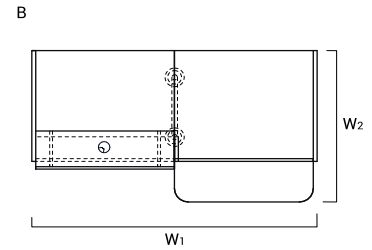
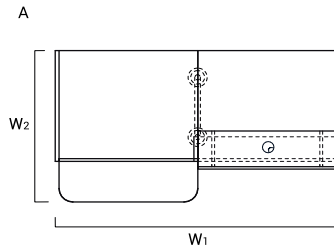
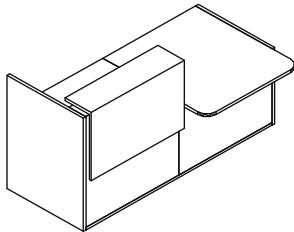
VOLUME

NUMBER OF PACKAGES

RECEPTION DESKS SYSTEMS



| INDEX SYMBOL | DIMENSIONS [mm] | | | | | | kg | m3 | pcs | COMPONENTS |
|--------------|-----------------|----------------|----------------|----------------|------|--|-------|-------|-----|---|
| | W ₁ | W ₂ | D ₁ | D ₂ | H | | | | | |
| TRA133 | 3056 | 1120 | | | 1090 | | 135.0 | 0.426 | 9 | TR12+TR10+TR2P+TR11+TR2L+TR10+TR1P+2xNL41 |
| TRA134 | 3456 | 1120 | | | 1090 | | 143.0 | 0.451 | 9 | TR12+TR12+TR2P+TR11+TR2L+TR12+TR1P+2xNL41 |
| TRA135 | 3856 | 1120 | | | 1090 | | 147.0 | 0.475 | 9 | TR12+TR14+TR2P+TR11+TR2L+TR14+TR1P+2xNL41 |



| INDEX SYMBOL | DIMENSIONS [mm] | | | | | | kg | m3 | pcs | COMPONENTS |
|--------------|-----------------|----------------|----------------|----------------|------|--|-------|-------|-----|------------------------------------|
| | W ₁ | W ₂ | D ₁ | D ₂ | H | | | | | |
| A TRA36L | 2056 | 1120 | | | 1159 | | 111.5 | 0.467 | 7 | TR1L+TR10+TR2P+TR11+TR3P+TR99+NL41 |
| B TRA36P | 2056 | 1120 | | | 1159 | | 111.5 | 0.467 | 7 | TR3L+TR11+TR2L+TR10+TR1P+TR99+NL41 |
| A TRA37L | 2256 | 1120 | | | 1159 | | 115.5 | 0.479 | 7 | TR1L+TR12+TR2P+TR11+TR3P+TR99+NL41 |
| B TRA37P | 2256 | 1120 | | | 1159 | | 115.5 | 0.479 | 7 | TR3L+TR11+TR2L+TR12+TR1P+TR99+NL41 |
| A TRA38L | 2456 | 1120 | | | 1159 | | 117.5 | 0.491 | 7 | TR1L+TR14+TR2P+TR11+TR3P+TR99+NL41 |
| B TRA38P | 2456 | 1120 | | | 1159 | | 117.5 | 0.492 | 7 | TR3L+TR11+TR2L+TR14+TR1P+TR99+NL41 |

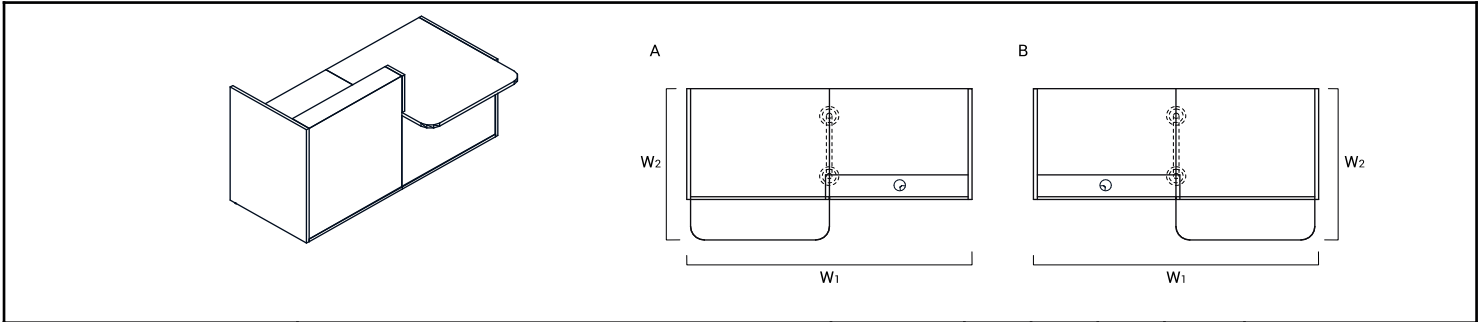
DESCRIPTION

- NET WEIGHT

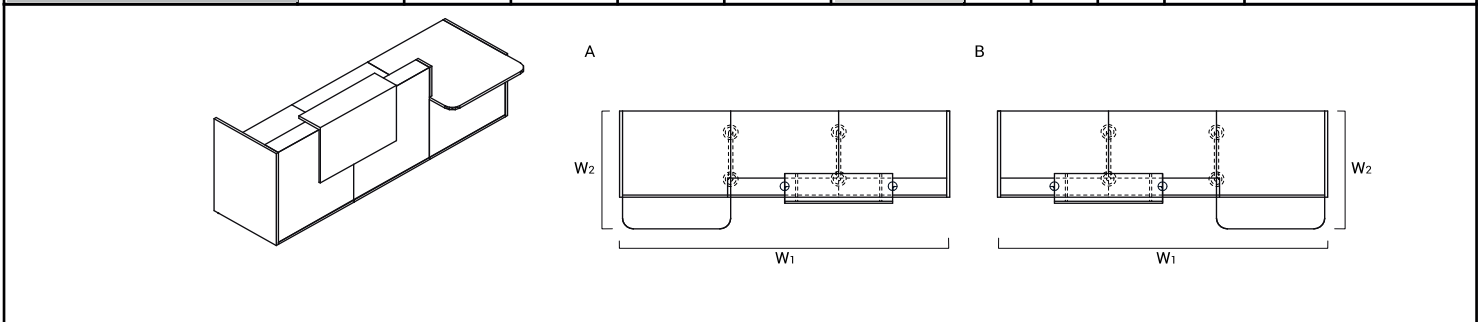
VOLUME

NUMBER OF PACKAGES

RECEPTION DESKS SYSTEMS



| INDEX SYMBOL | DIMENSIONS [mm] | | | | | | kg | m3 | pcs | COMPONENTS |
|------------------|-----------------|----------------|----------------|----------------|------|--|-------|-------|-----|-------------------------------|
| | W ₁ | W ₂ | D ₁ | D ₂ | H | | | | | |
| A TRA136L | 2056 | 1120 | | | 1090 | | 94.5 | 0.283 | 6 | TR1L+TR10+TR2P+TR11+TR3P+NL41 |
| B TRA136P | 2056 | 1120 | | | 1090 | | 94.5 | 0.284 | 6 | TR3L+TR11+TR2L+TR10+TR1P+NL41 |
| A TRA137L | 2256 | 1120 | | | 1090 | | 98.5 | 0.295 | 6 | TR1L+TR12+TR2P+TR11+TR3P+NL41 |
| B TRA137P | 2256 | 1120 | | | 1090 | | 98.5 | 0.296 | 6 | TR3L+TR11+TR2L+TR12+TR1P+NL41 |
| A TRA138L | 2456 | 1120 | | | 1090 | | 100.5 | 0.308 | 6 | TR1L+TR14+TR2P+TR11+TR3P+NL41 |
| B TRA138P | 2456 | 1120 | | | 1090 | | 100.5 | 0.308 | 6 | TR3L+TR11+TR2L+TR14+TR1P+NL41 |






| INDEX SYMBOL | DIMENSIONS [mm] | | | | | | kg | m3 | pcs | COMPONENTS |
|-----------------|-----------------|----------------|----------------|----------------|------|--|-------|-------|-----|--|
| | W ₁ | W ₂ | D ₁ | D ₂ | H | | | | | |
| A TRA39L | 3056 | 1120 | | | 1159 | | 145.5 | 0.596 | 9 | TR1L+2xTR10+TR2P+TR11+TR3P+TR99+2xNL41 |
| B TRA39P | 3056 | 1120 | | | 1159 | | 145.5 | 0.597 | 9 | TR3L+TR11+TR2L+2xTR10+TR1P+TR99+2xNL41 |
| A TRA40L | 3456 | 1120 | | | 1159 | | 153.5 | 0.620 | 9 | TR1L+2xTR12+TR2P+TR11+TR3P+TR99+2xNL41 |
| B TRA40P | 3456 | 1120 | | | 1159 | | 153.5 | 0.621 | 9 | TR3L+TR11+TR2L+2xTR12+TR1P+TR99+2xNL41 |
| A TRA41L | 3856 | 1120 | | | 1159 | | 157.5 | 0.645 | 9 | TR1L+2xTR14+TR2P+TR11+TR3P+TR99+2xNL41 |
| B TRA41P | 3856 | 1120 | | | 1159 | | 157.5 | 0.645 | 9 | TR3L+TR11+TR2L+2xTR14+TR1P+TR99+2xNL41 |

DESCRIPTION

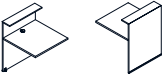



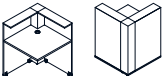
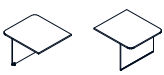

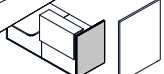

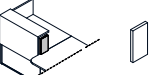
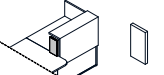
- NET WEIGHT

VOLUME


NUMBER OF PACKAGES

| PRODUCT ILLUSTRATION | DIMENSIONS [mm] | | | INDEX SYMBOL | |  |  |  | | COMMENTS |
|----------------------|-----------------|-------|--------|--------------|--|---|---|---|--|----------|
| | WIDTH | DEPTH | HEIGHT | | | kg | m3 | pcs | | |


COMPOSITION ELEMENTS




| | | | | | | | | | | |
|---|------|------|------|------|--|------|-------|---|--|---|
|  | 800 | 818 | 1090 | TR08 | | 25.0 | 0.054 | 1 | | |
|  | 1000 | 818 | 1090 | TR10 | | 32.0 | 0.067 | 1 | | |
|  | 1200 | 818 | 1090 | TR12 | | 36.0 | 0.079 | 1 | | |
|  | 1400 | 818 | 1090 | TR14 | | 38.0 | 0.091 | 1 | | |
|  | 818 | 818 | 1090 | TR90 | | 36.0 | 0.098 | 2 | | |
|  | 1000 | 1120 | 740 | TR11 | | 30.0 | 0.092 | 1 | | |
|  | 1000 | 282 | 650 | TR99 | | 17.0 | 0.183 | 1 | | decorative lighted element |
|  | 28 | 820 | 1090 | TR1L | | 17.0 | 0.035 | 1 | | side panel for high units -left |
|  | 28 | 820 | 1090 | TR1P | | 17.0 | 0.035 | 1 | | side panel for high units -right |
|  | 28 | 182 | 350 | TR2L | | 1.5 | 0.003 | 1 | | left upper side panel for combining low and high element |
|  | 28 | 182 | 350 | TR2P | | 1.5 | 0.003 | 1 | | right upper side panel for combining low and high element |

DESCRIPTION

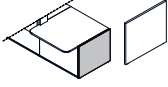
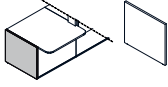
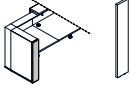
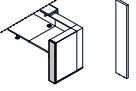
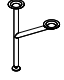
 - NET WEIGHT

 VOLUME

 NUMBER OF PACKAGES

| PRODUCT ILLUSTRATION | DIMENSIONS [mm] | | | INDEX SYMBOL | |  |  |  | | COMMENTS |
|----------------------|-----------------|-------|--------|--------------|--|---|---|---|--|----------|
| | WIDTH | DEPTH | HEIGHT | | | kg | m3 | pcs | | |


COMPOSITION ELEMENTS

| | | | | | | | | | | |
|---|-----|-----|------|-------------|--|------|-------|---|--|-----------------------------------|
|  | 28 | 820 | 740 | TR3L | | 12.0 | 0.025 | 1 | | left side panel for low unit |
|  | 28 | 820 | 740 | TR3P | | 12.0 | 0.025 | 1 | | right side panel for low unit |
|  | 28 | 182 | 1090 | TR4L | | 4.0 | 0.008 | 1 | | side panel for high units -left |
|  | 28 | 182 | 1090 | TR4P | | 4.0 | 0.008 | 1 | | side panel for high units - right |
|  | 585 | 142 | 712 | NL41 | | 2.0 | 0.063 | 1 | | round profile leg |

DESCRIPTION

 - NET WEIGHT

 VOLUME

 NUMBER OF PACKAGES