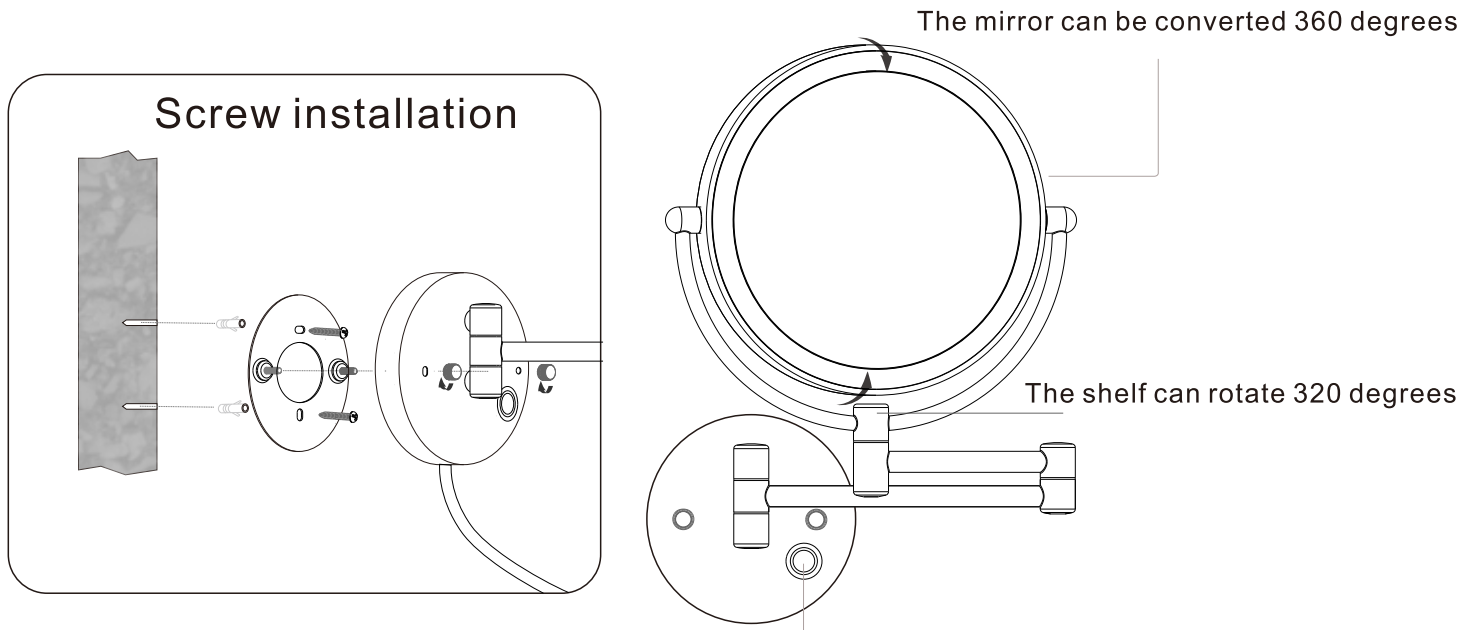


Install next to the outlet where the cable plug can extend



on-off: Touch switch: light touch switch, adjust lighting brightness by pressing and holding with finger
The light intensity of the first light touch was 30%, and that of the second light touch was 60%
And the light intensity of the third light touch is 100%

Installation precautions

Please read this manual to confirm whether the use method and installation environment meet the requirements

To avoid falling off during installation, please check whether the screws and suspension plate are firm

The product is installed indoors and installed away from places where it may touch the water and keep dry

Clean regularly and remove stains with a soft, dry cloth

This product is applicable to voltage INPUT parameters:AC 100-240V~50/60Hz

(There is a built-in power controller)The LED lighting parameter is DC12V~1A

To prevent falling and breaking, please follow the instructions to install and use.

Children are strictly prohibited from playing.

Please do not store under sunlight to avoid serious consequences such as fire caused by sunlight reflection.

The lens is a glass product. Do not hit the hard object to avoid breaking.

If it is broken, do not touch it directly. Wear gloves or spacers for cleaning.