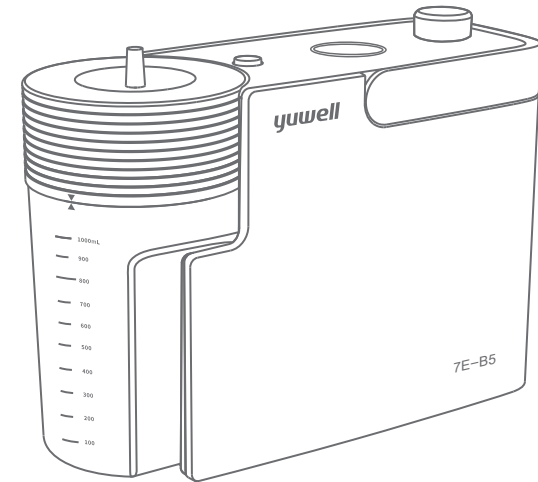


**yuwell**

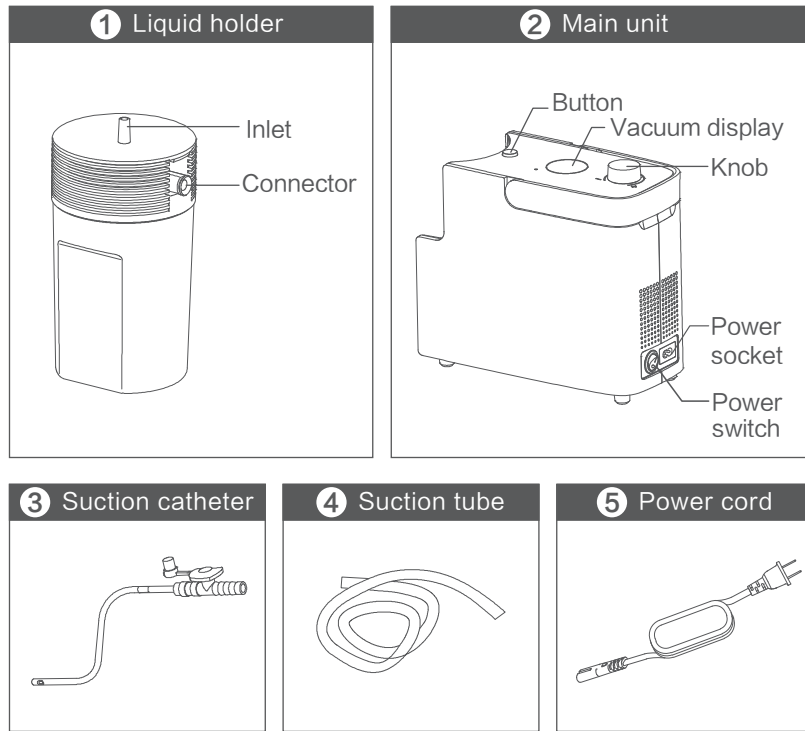
**yuwell**



Portable phlegm suction unit  
Model:7E-B5

Quick operation instructions

## Assembly



## Precautions

1. Do not run continuously for more than 30 minutes.
2. When adjusting the negative pressure, please block the suction tube to ensure that there is no air leakage in the suction tube (air leakage will affect the adjustment of the negative pressure).
3. During use, please make sure that the liquid level in the liquid holder does not exceed the maximum liquid level indication.
4. When assembling the lid of the liquid holder to the canister body, make sure that the arrow marks on the surface of the two are aligned, otherwise air leakage may occur or the liquid holder may not be assembled with the main unit.

\*For details, please refer to the user's manual

## Steps

