

DP-20

Digital Ultrasonic Diagnostic Imaging System



DP-20

Digital Ultrasonic Diagnostic Imaging System

Good image quality and compact ergonomic design with Full Screen, make the new DP-20^{Power} edition your ideal choice of B/W ultrasound. With superb PW Doppler imaging to access blood flow in different clinical conditions, DP-20^{Power} edition can accompany you at an all new level. Built-in battery and mobile trolley provides you a limitless ultrasound solution.



Ergonomic Mobile Design with Full Screen

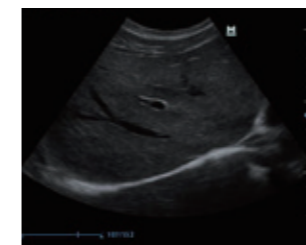
- 12.1 inch high definition LED with full screen design
- 30 degree tilting angle adjustable monitor
- Maximum 2 universal transducer connectors
- User friendly control panel with backlit
- Light and compact design for extreme portability

Advanced Imaging Technologies

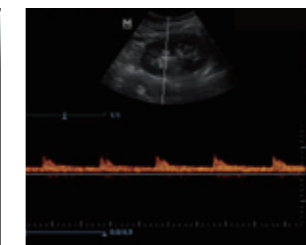
- PW Doppler and Auto Trace reveal details of blood flow for more comprehensive diagnosis
- Tissue Harmonic Imaging for enhanced contrast resolution
- iClear for Speckle Reduction Imaging, providing clear and sharp lesion contours
- iTouch for quick image optimization
- iZoom for instant full screen image zoom

Convenient Workflow

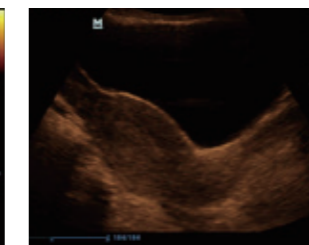
- iScanHelper offers ultrasound tutorial for your practice
- iStorage for instant images and reports transfer to PC
- User-defined keys for programmable personalized operations
- 1.5h uninterrupted scanning with rechargeable battery
- 500GB hard disk for large patient data storage



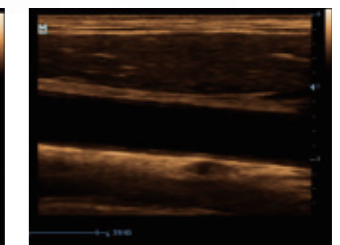
Liver



PW Doppler image of Kidney



Uterus



Carotid