

HEINE OMEGA® 500 INDIRECT OPHTHALMOSCOPE

• 31753 HEINE OMEGA 500 XENON-HALOGEN INDIRECT OPHTHALMOSCOPE 6V - C-004.33.539

With mPack pocket battery, plug-in transformer, headband rheostat and 90° angled adapter
 - clearer, crisper views: a new illumination system with Xenon Halogen Technology bulb produces less reflexes off the cornea and clear, high resolution bright images of the fundus.

- enhanced variable pupil function: allows for the precise, synchronized selection of observation and illumination optics for any pupil size. It provides stereopsis in pupils ranging from 10 mm to 1 mm.

- fully featured: 3 Spot sizes: Large, Medium and Small. Integrated diffused light filter.

3 Integrated Filters: Red-free, Cobalt Blue, and Yellow.

- Omega headband comfort: articulating Rear Hinge provides vertical adjustment of the rear band of the headband for individual placement.

• 31756 HEINE OMEGA 500 UNPLUGGED LED™ INDIRECT OPHTHALMOSCOPE 6V - C-008.33.535

With mPack battery integrated in headband, plug-in transformer, headband rheostat and 90° angled adapter. Same feature as 31753 with in addition:

- LED technology: absolutely homogeneous, uniform illumination, up to 100% brighter compared with XHL (Xenon technology)

- rechargeable battery integrated on the headband

- mPack rechargeable battery: charging time 2 hours, operating time 8 hours

• 31757 HEINE OMEGA 500 LED™ INDIRECT OPHTHALMOSCOPE WITH DV1 DIGITAL VIDEO CAMERA - C-008.33.561

with mPack UNPLUGGED with plug-in transformer

1280 x 960 imaging: capable of capturing High-Resolution video

- simple operation: digital imaging without any additional adjustments.

- comfortable and balanced fit: headband perfectly distributes the low weight of the camera and optics

- integrated focus adjustment

- interface and software: will plug into any laptop or computer via USB 2.0 interface. Supplied with software program for video recording and image capture. For more information see <http://dv1.heine.com>

- cable-free power source: system with mPack UNPLUGGED rechargeable battery.



5 YEARS WARRANTY

Light weight only 450g



31757

WELCH ALLYN MACROVIEW™ OTOSCOPE

• 32100 MACROVIEW™ HEAD - 23810

• 32101 LITHIUM ION HANDLE WITH AC CHARGING MODULE 3.5 V - 71902

This next-generation otoscope features advanced optics that increase magnification while giving you a nearly full view of the tympanic membrane - virtually eliminating the need for panning. With its easy-to-focus eyepiece, MacroView allows for enhanced visualization to help see past wax, locate fluid behind the eardrum, and even perform exams without your glasses.

- twice the field of view

- 30% greater magnification than a traditional otoscope

- nearly a full view of the tympanic membrane

- better clarity and definition of landmarks

- ability to adjust focus for variable ear canal lengths or farsighted eyes

• 32106 KLEENSPEC® ADULT DISPOSABLE EAR SPECULA 4.25 mm - box of 850 pcs - 52434-UB

• 32105 KLEENSPEC® PEDIATRIC DISPOSABLE EAR SPECULA 2.75 mm - box of 850 pcs - 52432-UB

• 32135 SPARE HALOGEN BULB - 3.5 V - 06500 U

Adjustable focus wheel allows to accommodate for variable ear canal lengths and farsighted eyes a full view of the tympanic membrane

Tip grip ensures ear specula is fastened securely and easily disposed

Default focus position (the dot and the line)

Advanced optics give you 2X the field of view and 30% greater magnification than a conventional otoscope

Insufflation port for pneumatic otoscopy

32100

WelchAllyn®

Lithium-ion handle with AC charger module compatible with all Welch Allyn instrument heads 3.5 V

32101



WELCH ALLYN PANOPTIC™ OPHTHALMOSCOPE

• 32110 PANOPTIC OPHTHALMOSCOPE HEAD - 11810

• 32101 LITHIUM ION HANDLE WITH AC CHARGING MODULE 3.5 V - 71902

PanOptic is a breakthrough concept in ophthalmoscopy. Thanks to an innovative, optical design known as Axial PointSource™ Optics, it will greatly enhance your funduscopic examinations.

- fast easy entry into small, undilated pupils

- 5X larger field of view than you see with standard ophthalmoscopes in an undilated eye

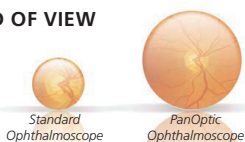
- 25° field of view versus the 5° field of view of standard ophthalmoscopy

- a 26% increase in magnification, making it easier to see retinal details

- greater distance between practitioner and patient means greater comfort for all

• 32127 SPARE HALOGEN BULB - 3800 U

FIELD OF VIEW



Larger view of the fundus

5X



Patented Axial PointSource™ Optics: makes it easy to enter undilated pupils, and provides a 25° field of view, resulting in a view of the fundus 5 X greater than with a standard ophthalmoscope in an undilated eye

Halogen HPX™ Lamp: provides whiter, brighter light

Glare Extinguishment System: prevents interference from unwanted glare and reflections

Welch Allyn 3.5 V Power Sources: compatible with any standard 3.5 V power source including: desk charger handles, convertible battery handles, wall transformers and the Lithium Ion Power Handle

Patient Eyecup: allows proper viewing distance, provides image stability, serves as a pivoting point for panning around the retina, helps with orientation, and screens out ambient light. The eyecup is cleanable and reusable

PanOptic Soft Grip: ergonomically designed for maximum comfort, balance, and access to controls.

Aperture Dial: allows you to select micro, small, and large spot sizes. Also includes red-free filter and slit aperture, half-moon aperture for corneal exams

Dynamic Focusing Wheel: adjusts the focus in a continuous, smooth action for more precise control and optimum view. Available focusing range is -20 to +20 diopters

