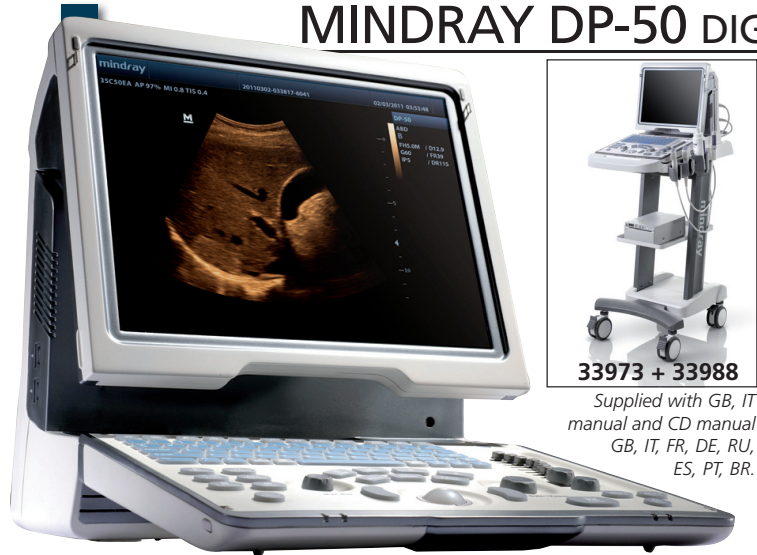


# MINDRAY DP-50 DIGITAL ULTRASOUND DIAGNOSTIC SYSTEM



**33973 + 33988**

Supplied with GB, IT manual and CD manual  
GB, IT, FR, DE, RU, ES, PT, BR.

• **33973 MINDRAY DP-50 PORTABLE ULTRASOUND** with 15" high resolution LCD monitor, 2 probe connectors, 320GB hard disk, 4 USB ports, multiple software package, without probes. **Imaging mode:** B, B/B, 4B, B/M, M

- Image processing technology:**
- Phase Shift Harmonic Imaging
  - iBeam™ Spatial Compound Imaging
  - iClear™ Adaptive Speckle Suppression Imaging
  - iTouch™ Auto Optimization
  - iZoom™ Automatically expand the image to full screen
  - Slant scanning for linear probes (2D Steer)
  - Tissue Harmonic Imaging
  - Trapezoid imaging

**Wideband multifrequency probes:** continuously adjustable 2-14 MHz

- Intelligent Workflow/Storage/Review:**
- iStation™ Intelligent patient data management system
  - 320 GB integrated hard disk for storage
  - Cine memory capacity (Max.) B mode: 10566 frames
  - M mode: 66.3 s

• **33972 MINDRAY DP-50 PT PORTABLE ULTRASOUND PHYSIOTHERAPY PRESET** with 15" high resolution LCD monitor, 2 probe connectors, 320GB hard disk, 4 USB ports, multiple software package, without probes.

Same as 33973 but with real time ultrasound imaging (RTUI) for physiotherapy. Dedicated Physiotherapy presets: pelvic/hip/lumbar spine/shoulder/elbow/wrist/knee/ankle/Achilles tendon/cervical spine. Dynamic tracking therapeutic effects with image comparison function. Optimal musculoskeletal image quality

TECHNICAL SPECIFICATIONS	
Display:	15" LCD
Display language:	GB, FR, IT, ES, PT, RU, PL, CZ, TR, FI, DK, NO, SE, DE
Power:	AC 100-240 V - 50/60 Hz rechargeable lithium-ion battery - on request
Size and weight:	19x41.5xh 37.8 cm (7.5"x16.3"xh 14.9"); 7.7 kg (17 lb)

# MINDRAY Z5 COLOUR DIAGNOSTIC ULTRASOUND SYSTEM

• **33880 MINDRAY Z5 COLOUR PORTABLE ULTRASOUND** with 15" high resolution LCD monitor, 2 probe connectors, 320GB hard disk, 4 USB ports, multiple software package, without probes.

A colour doppler system that offers a rare combination of high performance and low cost. Superior image quality, affordability, versatility and mobility in a unique portable Doppler system:

**Versatility**

- scanning modes: B, Colour, PW, Power, M, FreeXros M
- image display modes: B, 2B, 4B, B/C, B/M, B/PW, Triplex PW
- applications: ABD/OB/GYN/CAR/SML/URO/VAS/ORTH/EM/NERVE
- transducer variety : Convex, Linear, Micro-convex, Endocavity
- extended scanning angle with ExFov function
- high frequency linear probe for superficial scanning

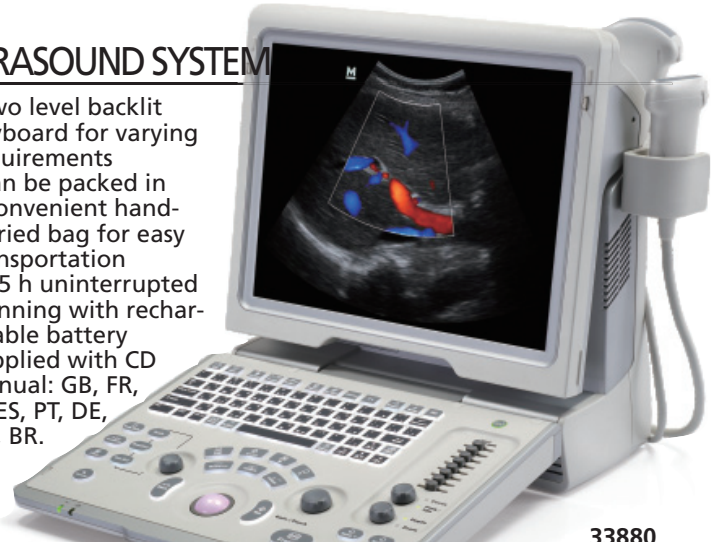
**Productivity**

- iTouch: quick image optimization with one-click
- iZoom: instant full screen zoom with one-click
- iStation: patient database review and analysis platform
- iStorage: direct data transfer to PC
- Clipboard: easy play, preview and sharing of cineloop
- Multiple image formats : BMP, JPG, DCM, AVI, DCM, CIN

**Mobility**

- compact and streamlined design weighing 7.7kg
- 15" LCD monitor with 30 degree tilt function
- dual universal transducer connectors

- two level backlit keyboard for varying requirements
  - can be packed in a convenient hand-carried bag for easy transportation
  - 1.5 h uninterrupted scanning with rechargeable battery
- Supplied with CD manual: GB, FR, IT, ES, PT, DE, RU, BR.



**33880**

TECHNICAL SPECIFICATIONS	
Display:	15" LCD high resolution 1024x768
Software display + keyboard input:	GB, FR, IT, ES, PT, RU, PL, CZ, DE
Keyboard input:	TR, FI, DK, NO, SE
Power:	AC 100-240 V - 50/60 Hz rechargeable lithium-ion battery - on request
Size and weight:	19x41.5xh 37.8 cm (7.5"x16.3"xh 14.9"); 8.8 kg (19.4 lb)

# PROBES AND ACCESSORIES FOR DP-50 AND Z5

GIMA code	ACCESSORIES for DP-50 and Z5
33875	Needle guided brackets for Linear probe (33983)
33876	Needle guided brackets for Micro-Convex probe (33984)
33975	Lithium-ion rechargeable battery for DP-50 and Z5
33987	Carrying bag for DP-50 and Z5
33988	UMT-150 mobile trolley for DP-50 and Z5
33968	SONY PRINTER UP-X898 MD FOR DP-50
33993	SONY COLOUR PRINTER UP-25 MD FOR Z5

PROBES DP-50 and Z5			FREQUENCY (MHz)		● Main application									
GIMA code	Mindray code	Scanning method	Main freq.	Probe band width	ABDOMINAL	OB / GYN	UROLOGY	SMALL PARTS	CARDIOLOGY	MSK	VASCULAR	PEDIATRIC	PROSTATE	ORTHOPEDIC
33982	35C50EA	Convex	3.5	2.0 - 5.0	•	•								
33983	75L53EA	Linear	7.5	5.0 - 10.0	•					•	•			
33978*	65C15EA	Micro-convex	6.5	5.0 - 8.5										
33984*	65EC10EA	Micro-convex	6.5	5.0 - 8.5										
33990*	10L24EA	Linear array	10.0	8.0 - 14										
34004	75L38EA	Linear	7.5	5.0 - 10.0										

\*not for DP-50PT



**33987**

Trolley size:  
44,5x53,5x  
h 81 or 87 cm

Height selectable  
(2 levels) when installing



**33988**